

DOORS OPEN HAMILTON 2022, May 7 to 8

Shawn & Ed Brewing Co. (one of five in-person sites in Dundas)

Doors Open hours: 11 am to 4 pm Saturday and Sunday. Tours will be offered continuously throughout both days of the event and will include an explanation of the SHED brewing process and equipment. At other times, 20-minute tours of the brewery may be booked on its [website](http://www.lagershed.com). The brewery is open 7 days a week from 11am to 9 pm from Sunday to Friday and 10 am to 9 pm on Saturday.

Address: **65 Hatt Street, Dundas, Ontario** (at the intersection of Hatt Street and Sydenham Road)
Website: www.lagershed.com
Email: taproom@lagershed.com
Phone: (289) 238-9979

VIRTUAL TOUR

Prepared by ACO Hamilton Region Branch member, Ann Gillespie, March/ April 2022

The Shawn & Ed Brewing Co. stands in the centre of the former industrial sector of the Town of Dundas on Hatt Street, one street south of the main commercial thoroughfare: King Street West at the south-east corner of Sydenham and Hatt streets. Opposite the brewery on the south side of Hatt Street is the former Valley City Manufacturing Co.'s main building complex at 64 Hatt Street, now Millworks Creative Studios (also an in-person and virtual site on Doors Open Hamilton 2022). This large post-and-beam structure with brick masonry walls and a front-gabled roof was designed and built by Hamilton architect and contractor Peter Brass (1838-1904). It was originally constructed in 1885-6 to house an indoor rink for the Dundas Curling & Skating Club. However, this use was short-lived and it then served as a warehouse for the Caldwell Feed Company. From 1922 the building served as a garage and depot for the Highway King Bus Lines, which merged with Canada Coach Lines Ltd. in the 1930s. It initially ran buses between Dundas and downtown Hamilton but later to other towns in the Golden Horseshoe area. By 1951 the bus depot had been converted to a garage and repair shop for Canada Coach lines. The building was subsequently home to a variety of manufacturing businesses until 1974, when it was acquired by the Valley City Manufacturing Co. for use as an upholstery warehouse for their furniture-making business and wood storage facility.

In November 2012, the building was purchased by Ed Madronich (owner of the *Flat Rocks Cellars* winery in Jordan) and Shawn Till. Their bold vision to convert the building into a craft brewery was realized in 2015-16, based on plans drawn up by [Two Row Architect](#), Six Nations reserve, with additional interior renovations completed in 2020 (designed by [mcCallum Sather](#), Hamilton). When a new metal roof was installed, the original skylights were re-opened allowing natural light to partially illuminate the interior. After facing many construction challenges, the brewery was officially opened on [March 31, 2016](#), when the first 12 oz. glass of *LAGERshed* was ceremoniously poured, with beer flowing from the spigots of the gigantic stainless-steel fermentation tanks.

Architecturally, the building is a representative example of a late Victorian indoor ice rink for skating and curling and one of the earliest facilities of its kind in Canada. The building retains its original front-gabled roofline with truncated ends. An 1896 photo of the building reveals that the original façade

featured a central arched carriage doorway flanked by brick piers which terminated in pinnacles. Unsympathetic alterations in the past included the removal of the pinnacles and the replacement of the carriage doorway with a larger overhead rolling door, probably installed to accommodate larger buses. In 1951 the building served as a garage and repair shop for Canada Coach Lines.

The taproom serves up a variety of lagers and ales bearing such imaginative names as *LagerSHED*, *BarrelSHED* and *OctoberSHED*, which may be purchased by the glass or as a *tasting paddle*. Bottled beer, “beer pies” and a selection of *Flat Rock Cellars* wine (take-home bottles and by the glass) are available for purchase in the retail area. The facility has also evolved into an entertainment venue, hosting concerts and weekly events, with a stage set up at the rear. This local landmark has proved to be a great asset to downtown Dundas, drawing visitors from outside the area, and a popular place with locals to enjoy beer and pizza with friends and family.

For a more detailed description of the history of this site and the renovations undertaken for the brewery conversion, read [this article](#) published in the Spring 2016 issue of the ACO’s magazine ACORN with the theme *An Appetite for Heritage: “From Malting to Skating – Bringing Beer to Dundas”*.



SHAWN & ED
BREWING COMPANY

TRIVIA NIGHT
WEDNESDAYS
7:00 - 8:30pm

with
Hub
THE HAMMER

Form a team & book a table
TICKETS: FREE
Call 289-238-9979
to register
Trivia played on Smartphones
(charge 'em up!)
Social Distancing Rules Apply



LAGERSHED.COM
65 HATT ST
DUNDAS ONTARIO



SHAWN & ED
BREWING COMPANY

MUSIC
to our **BEERS**
THURSDAYS
LIVE LOCAL MUSIC
6:30 - 8:30pm EVERY WEEK

INSTAGRAM @LAGERSHED
FOR PERFORMANCE INFO

*You can dance if you want to or
you can leave your friends behind.
Regardless, there will be great
beer and good times!*



LAGERSHED.COM
65 HATT ST
DUNDAS ONTARIO



SHAWN & ED
BREWING COMPANY

FAMILY
Concert Series
FEATURING MR. BEN

Sunday March 27
Sunday April 24
Sunday May 29
Sunday June 26
Sunday Sept 18
Sunday October 30
Sunday November 27



Mr. Ben specializes in early childhood music. With 20 years experience, he is an admired children's entertainer famous for performing well-known classics with a folk twist.

All shows start at 1 pm
ENTRY IS FREE

LAGERSHED.COM
65 HATT ST
DUNDAS ONTARIO

Poster images courtesy of the Shawn & Ed Brewing website.

Exterior Views (March to April 2022)



Front (south) façade of the Shawn & Ed Brewing Co. On the left is a new fire exit doorway and restricted access doorway for staff. The doorway at the east end serves as the entrance for customers. Truck deliveries are made through the rolling door entrance. (Chris/ Carol Priamo)



South and east facades showing two of the original roof vents (now closed) and a larger central one installed since 1981 (still functioning with two exhaust fans). The exhaust pipe was added when the wood-fired pizza oven was installed in 2021. All of the 2016-2022 photos below were taken by the author except where noted.



The long east façade of the building with eleven window bays.



Rear section of west façade showing one of the four restored skylights and original roof vents, which are now only decorative elements as they are no longer needed for ventilation. View from parking area behind the former bowling alley building at 15 Foundry Street.



East section of the front façade showing the replacement steel windows with a two-over-two configuration replicating the original wood sash windows and the voussoir-arched brick lintels. The original window opening was enlarged to create the existing doorway. Below: Section of the east façade showing two bricked up openings, whose original use remains a mystery.



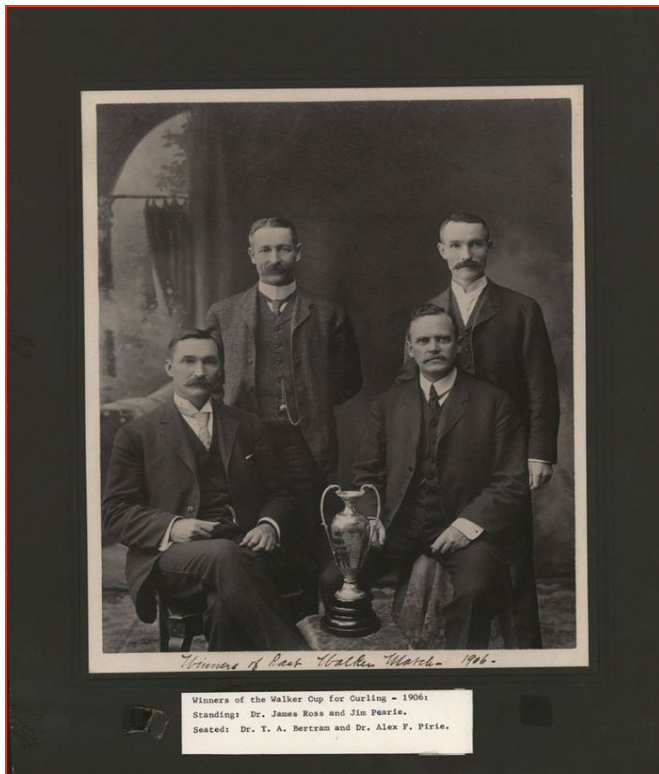
1886 to the 1980s



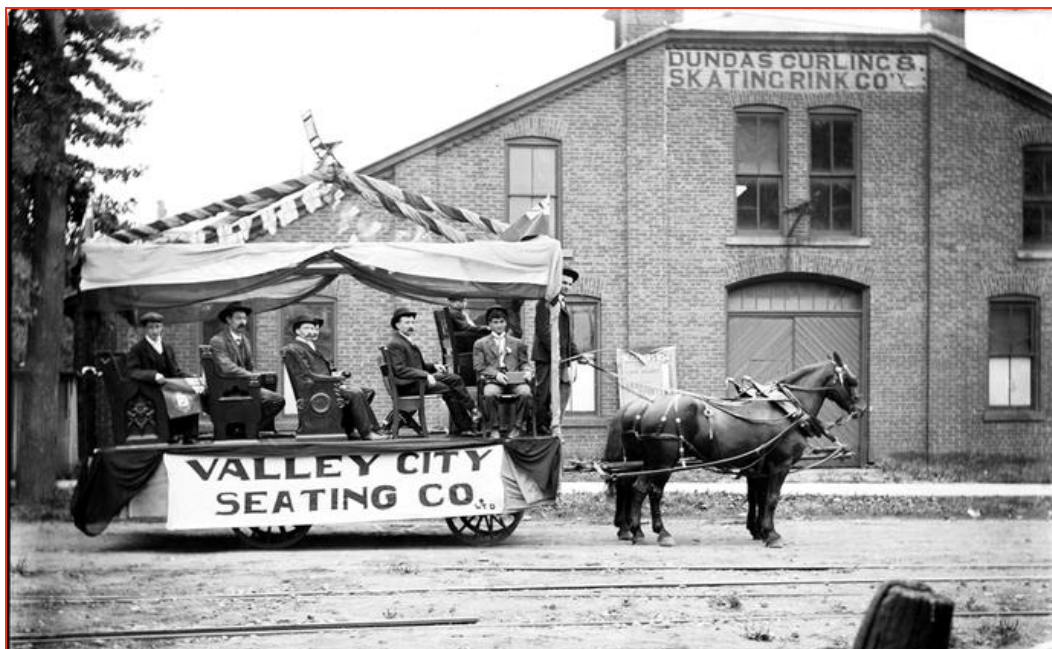
The Dundas Curling & Skating Rink, circa 1896. Photo shows the original façade with a single carriage entrance, and the original windows, four of the eight skylights and three square roof vents. (*Picturesque Dundas* – 1972; reprint of original 1896 publication. (Dundas Museum & Archives: DM&A)



The Dundas Curling & Skating Rink, after a major snowfall, looking north-west from the south side of Hatt Street circa 1900. (DM&A)



1906 group portrait of the winners of the Walker Cup for curling at the Dundas Curling & Skating Club. (DM&A: P-1153)



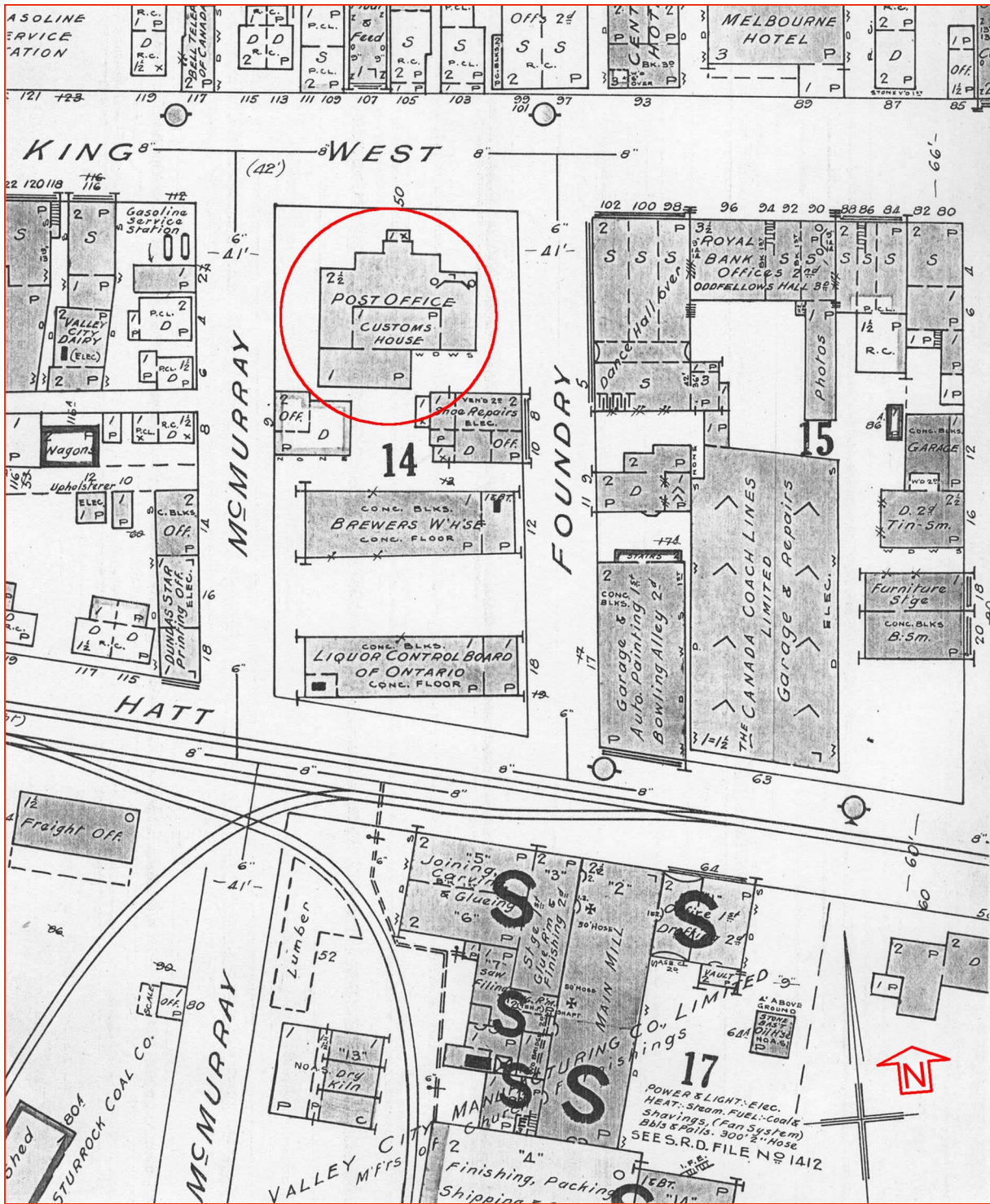
A horse-drawn parade float for the Valley City Seating Co. in front of the Dundas Curling & Skating Rink, circa 1910. Shows the double diagonal board doors of the carriage entrance with a voussoir-arched brick lintel and transom light. (DM&A: GN-0346 – cropped)



Circa 1981 photo of the building when it served as a warehouse for Valley City Manufacturing Co. located across the street at 64 Hatt Street. By this time the piers flanking the rolling door had been cut back to the roofline and the original skylights covered (likely at some point when the building was re-roofed). Two of the window openings on the east side of the rolling door had been replaced by doorways, possibly when the building was converted to a bus depot. All other windows are still the original two-over-two paned wood sash ones. The configuration of doorways and windows on the front façade was again modified as part of the brewery conversion. (Dale Creasy, unused photo for the *Picturesque Dundas Update – 1981, DM&A*)



View looking south-west of the principal (north) façade of Valley City Manufacturing Co. building complex, with the stone façade of the original 1846 foundry building. (Photo 1 from the *Preliminary Cultural Heritage Assessment for 64 Hatt Street, Dundas*, prepared by Ann Gillespie, April 2017, for the Hamilton Municipal Heritage Committee's Inventory and Research Working Group)



Section of the 1951 Fire Insurance Plan used as an illustration (Figure 7) in the Cultural Heritage Assessment of the former Dundas Post Office, 104 King Street West ... prepared by Ann Gillespie for Canada Post Corporation (September 2014). It shows the footprint of the Canada Coach Lines building and opposite the Valley City Manufacturing Co. complex. (Underwriters Survey Bureau, Insurance Plan of the Town of Dundas, Ont., July 1951; copy in the Hamilton Public Library, Local Archives & History)

Renovations Nearing Completion (January to March 2016)



Interior while renovations were still ongoing in January 2016, completed in time for the official opening on March 31, 2016. The stainless-steel tanks were supplied by an Italian company and shipped across the Atlantic. Below: looking towards the front entrance and the east wall rebuilt with concrete block, as explained below. The new framed structure (designed by *Two Row Architect*) was intended to provide office/ meeting space with washrooms and storage on the ground floor. (Jeremy Parsons)





Renovations in progress, February 2016. View from entrance foyer looking towards the overhead rolling glazed door on the rear wall. Below: the production area with the stainless-steel tanks and the low wall separating it from the public seating area. Shows the timber roof framing and one of the four restored skylights.





Interior view of the east wall showing exposed sections of the east wall that had to be rebuilt with concrete block after a “freak accident”. On the morning of December 8, 2000, a dump truck had a break failure while travelling down the very steep Sydenham Hill. The truck safely rolled through the intersection at King Street, veered into the parking lot on the east side of the warehouse and crashed through the [brick masonry wall](#) of the Valley City warehouse. Miraculously, there were no casualties and the truck driver only suffered cuts and bruises. The entire east wall from this point up to the south-east corner of the building was subsequently rebuilt with concrete block faced with reclaimed bricks, which were also used to clad the interior east wall, shown here in March 2016.



View of the front wall in March 2016, as partially reconstructed in 2001 with concrete block following the truck accident described in the previous caption, which also caused extensive damage to the south facade. The temporary partition wall was erected to separate the public and production areas and has since been replaced with a permanent wall.

Current Interior Views



Inside the retail area at the front of the building where their specialty pizzas ("Beer Pies") are baked in the wood-fired oven (shown below). The retail counter in the foreground serves for the sale of food, bottled beer, *Flat Rock Cellar* wine, and a variety of merchandise. (This photo and the following ones were taken in March 2022 by the author (unless otherwise noted).





View looking towards the front entrance through the merchandise display of sweatshirts, T-shirts, tuques, caps, socks, tote bags and the signature Shawn & Ed beer glasses (see last photo).

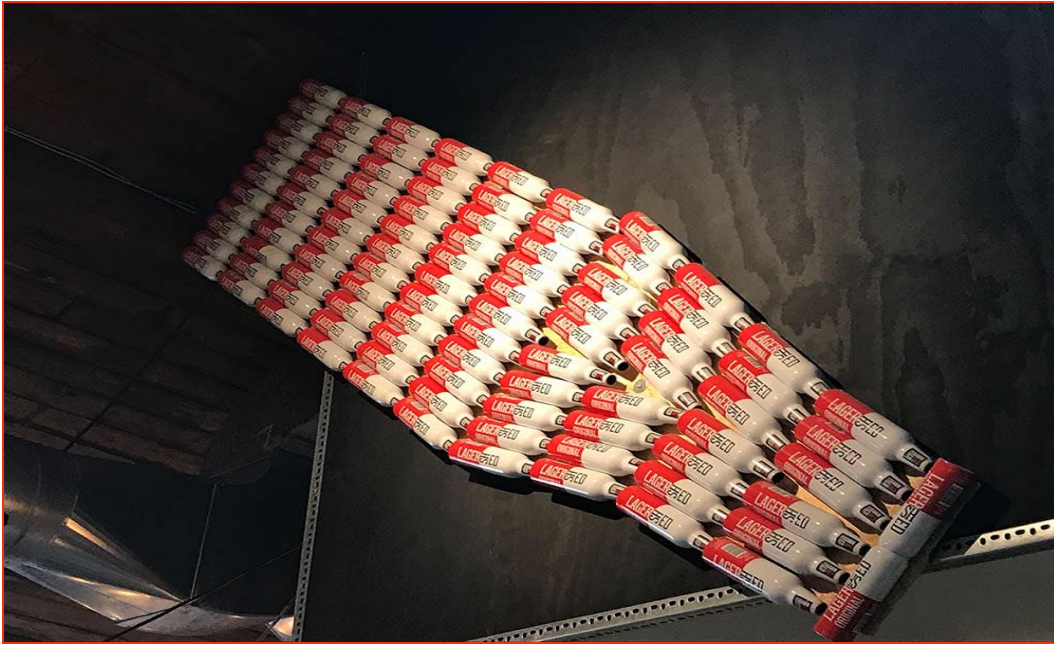


Above the tote bag display are reclaimed bricks offered for \$225 each with the purchaser's name stencilled on the brick. It is hoped that eventually these bricks will completely cover the exposed concrete block wall sections shown in the previous March 2016 photo.



Taproom bar with its countertop made of wood reclaimed from the building. The 1930s photo above the beer selection panel is one of the Highway King Bus Lines's coaches from the era when the building served as a bus depot. At the bar, customers may purchase beer by the glass or as a "tasting paddle" and obtain growler refills. Below: rear section of the wrap-around bar with a vintage photo of another Highway King bus (circa 1925) above the beer selection panel.





Wall-mounted sculpture created by SHED supervisor Ted Dekker, using their custom-made *Big Large* (473 ml.) aluminum bottles and located above the corridor to the washrooms (below).



Framed sections of bus destination scrolls dating back to the building's use as a bus depot now decorate the walls of the washroom corridor.



The stainless-steel tanks used in the beer-making process. Visit the brewery and take a tour to learn what the various sized tanks are used for. The large custom-made wood barrel is now used to ferment the BarrelSHED Amber Ale. Below: the production area defined by a low wall with the bar on the right. (Chris/ Carol Priamo)



View looking through the bar area towards the Studebaker and bus destination scroll (photos below).



A quiet Sunday evening view of the seating area looking towards the stage at the far rear end of the building.



This vintage truck was made in the Studebaker plant, which opened in Hamilton's east end industrial sector in 1948. In 1949, it was shipped to a farm in Saskatchewan, where it was used for transporting barley to be processed nearby in local breweries. In 2017, Ed purchased the truck and brought it to the

Shawn & Ed Brewing facility, where it stands on display in the production area loaded with cases of bottled LagerSHED. A fitting final destination!



Interior view looking through the seating areas towards the back wall, showing the roof trusses and one of the restored skylights.



One of several bus destination scrolls found in the building from its days as a bus depot. The scroll was hand-cranked by the driver to show his next destination at the top. These empty *Flat Rock Cellars* Pinot Noir barrels were originally used to make Shawn & Ed's BarrelSHED ale and are still occasionally used for special brews.



THANKS FOR TAKING THIS VIRTUAL TOUR – time for a refreshing glass of LagerSHED or perhaps a stronger brew like Anvil Ale or BarrelSHED. (Two19 Photography)

CHEERS!